



BURIMEC
SPA

ADVANCED INDUSTRIAL
MECHANICAL
CONSTRUCTIONS

www.burimec.it

Company Presentation Mechanical Constructions Division

Overview

Burimec S.p.A. was established in 1968 and has been operating in the iron working sector for over 40 years.

The company's main activity is based on the construction of mechanical construction and machining of any type.

Burimec S.p.A., with its product, addresses a particularly demanding domestic and foreign market.

The production premises are located in Via Nazionale, 24, Buttrio (Udine) and Via delle Industrie, 2, Pavia di Udine (Udine), Italy.

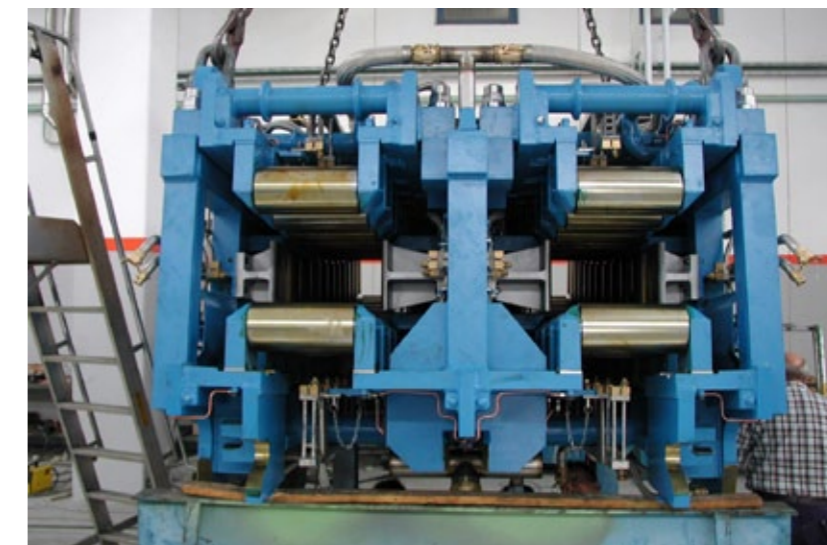
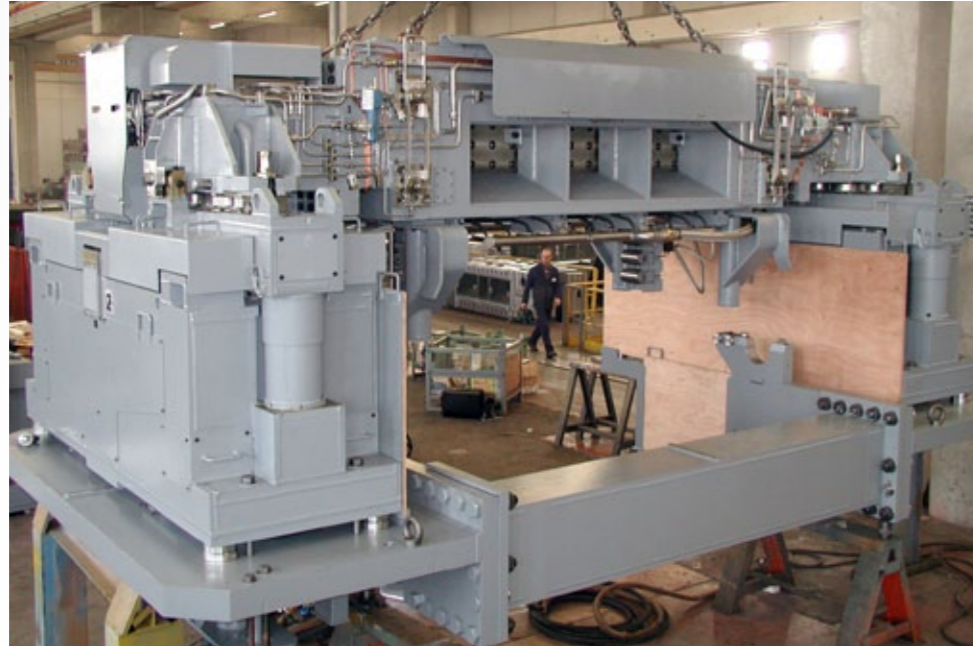
Currently Burimec employs 50 people, the factory occupies 10,100 sqm and there are 24,000 sqm of open space.

Burimec Spa pays particular attention to quality through its quality assurance standards according to ISO 9001:2000.

Mechanical Machining and Constructions

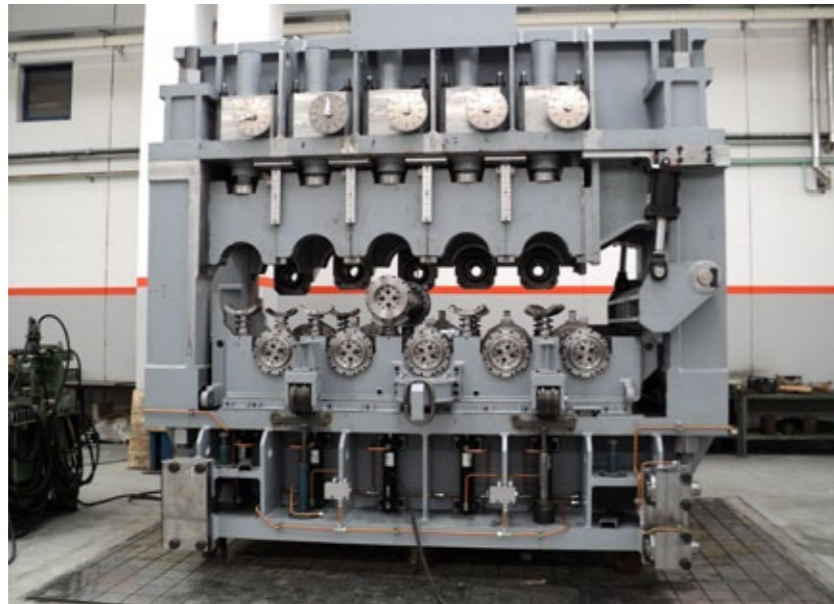
Continuous casting machines for slabs, blooms and billets

- tundish cars
- moulds
- oscillators (with mechanical/hydraulic drive)
- segments (bender, bow, straightener and horizontal)
- support structure
- withdrawal and straightening units
- pinch rolls
- hydraulic shears (vertical/diagonal)
- gas cutting cars
- dummy bars (flexible/rigid + handling devices)
- roller tables
- transfer - lifting devices
- cooling beds
- primary and secondary cooling systems



Rolling mill for flat and long products

- housings (up to 80 tons)
- work and back up rolls chocks
- work roll axial shifting devices
- work and back up rolls change equipments
- hydraulic balancing blocks
- stand run-in and run-out roller tables (roughing/vertical)
- gear units



Processing Lines

- rotating double side trimmer/scrap chopper
- pay off reels and tensions reels
- pulling bridles
- belt wrappers
- coil cars
- pinch rolls
- shears
- flattening machines
- magnetic belt conveyors
- deviators - deflectors
- roller tables
- outboard bearing units
- walking beams conveyor
- coil preparation station
- stretch straightening unit



Extrusion presses

- aluminum extruded presses from 1600 to 3000 tons



Spare parts for continuous casting, rolling milling and processing line machines



Mechanical working on single and series parts

- aeronautic components
- textile machines
- machine tools
- packing machines
- large marine propulsors
- hydrostatic pumps

Office and Factories Location



Buttrio Factory

Via Nazionale, 24
Buttrio (Udine), Italy

- 4.300 m² factory
- 300 m² office



Lauzacco Factory

Via delle Industrie, 2
Pavia di Udine (Udine), Italy

- 5.500 m² factory



Equipment and Machines



BORING AND MILLING MACHINES	
ALESAMONTI MMC65	
Longitudinal travel	6500 mm
Vertical travel	3500 mm
RAM axial travel	1000 mm
Spindle axial travel	700 mm
Total axial travel	1700 mm
Spindle diameter	150 mm
Rototraversing table	2500x2500 mm
Max. load	35 t.
CNC	Heidenhaim iTNC530M
Tool magazine	40 tools
SKODA FCW 150	
Longitudinal travel	10000 mm
Vertical travel	3000 mm
RAM axial travel	900 mm
Spindle axial travel	800 mm
Total axial travel	1700 mm
Spindle diameter	150 mm
Rototraversing table	2500x2500 mm
Max. load	25 t.
CNC	Siemens Sinumerik 840D
Tool magazine	60 tools
SKODA W160HB	
Longitudinal travel	10000 mm
Vertical travel	3000 mm
RAM axial travel	750 mm
Spindle axial travel	750 mm
Total axial travel	1500 mm
Spindle diameter	160 mm
Rototraversing table	3500x3000 mm
Max. load	45 t.
CNC	Siemens Sinumerik 850 N.C.
ARIES INNSE	
Longitudinal travel	12000 mm
Vertical travel	3500 mm
RAM axial travel	1150 mm
Spindle axial travel	800 mm
Total axial travel	1950 mm
Spindle diameter	150 mm
Rototraversing table	2500x2500 mm
Max. load	40 t.
CNC	Siemens 880
Tool magazine	60 tools

PAMA AT/130-2	
Longitudinal travel	3600 mm
Vertical travel	2000 mm
RAM axial travel	750 mm
Spindle axial travel	850 mm
Total axial travel	1600 mm
Spindle diameter	130 mm
Rototraversing table	2000x1600 mm
Max. load	10 t.
CNC	Selca 1100 N.C.
SAN ROCCO MEC80	
Longitudinal travel	1500 mm
Vertical travel	1200 mm
RAM axial travel	1000 mm
CNC	Heidenhain positioner
SAN ROCCO MEC80	
Longitudinal travel	1500 mm
Vertical travel	1200 mm
RAM axial travel	1000 mm
CNC	Selca 1000 N.C.
SAN ROCCO GSR 110 FP	
Longitudinal travel	2000 mm
Vertical travel	1500 mm
RAM axial travel	1000 mm
Spindle axial travel	550 mm
Total axial travel	1550 mm
CNC	Selca 3045 N.C.
MACHINING CENTER	
MANDELLI REGENT 1500 U25	
Longitudinal travel	2800 mm
Vertical travel	2000 mm
Column cross travel	1500 mm
Pallet tables	1000x1250 mm
CNC	Plasma
MANDELLI REGENT 1200	
Longitudinal travel	1450 mm
Vertical travel	1200 mm
Column cross travel	1200 mm
Pallet tables	1000x800 mm
CNC	Plasma
MANDELLI REGENT 1200	
Longitudinal travel	1450 mm
Vertical travel	1200 mm
Column cross travel	1200 mm
Pallet tables	1000x800 mm
CNC	Plasma

MANDELLI REGENT 10	
Longitudinal travel	2200 mm
Vertical travel	1180 mm
Column cross travel	1400 mm
Pallet tables	1000x1250 mm
CNC	Plasma
TURNING MACHINE (ORIZONTAL)	
DAEWOO PUMA 600/LMC with driver car	
Swing over bed	1030-900-800 mm
CNC	Fanuc Series 21i-TB
DAEWOO PUMA 350/LB	
Swing over bed	362x2155 mm
C.N.C.	Fanuc Series 18T
SAG 22 r 3	
Swing over bed	220x2000 mm
CNC	With display
SAG 20 im	
Swing over bed	220x2000 mm
CNC	With display
RIVOL	
Swing over bed	370x5000 mm
MISAL	
Swing over bed	200x1500 mm
MILLING	
RIGIVA R H 140 MB	
Longitudinal travel	1000 mm
Vertical travel	330 mm
RAM axial travel	470 mm
RADIAL DRILLS	
INVEMA 1250 C.M. 5	
HECKERT br 40/2x1250 C.M. 5	



Certification and Inspection

Certifications

Burimec Spa pays particular attention to quality through its quality assurance standards according to ISO 9001:2000.



Awards

On October 27th 2011, Burimec S.p.A. has been elected by Siemens VAI, out of 6000 suppliers worldwide, one of the five best supplier in the category "Global Competitiveness".

www.siemens-vai.com/supplier-stars





BURIMEC
SPA

Via Nazionale, 24 - 33042 Buttrio
Udine - Italy

T. +39 (0) 432 684 911

F. +39 (0) 432 673 344

E. burimec@burimec.it

W. www.burimec.it

